



CAT

33374

TH103

1508

CAT

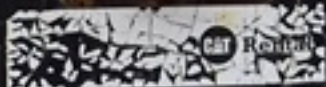


DIESEL

CAT



CATERPILLAR



EXL

06/04/2017





CAT Rental



CAT

 Rental

33374

H103

508

CAT



215

**CAT**  
REGO





**CAT**

**3**  
Points  
of  
Contact





CAT

TUBELESS

10 PLY RATING

CAT

3  
Points  
of  
Contact



TH103

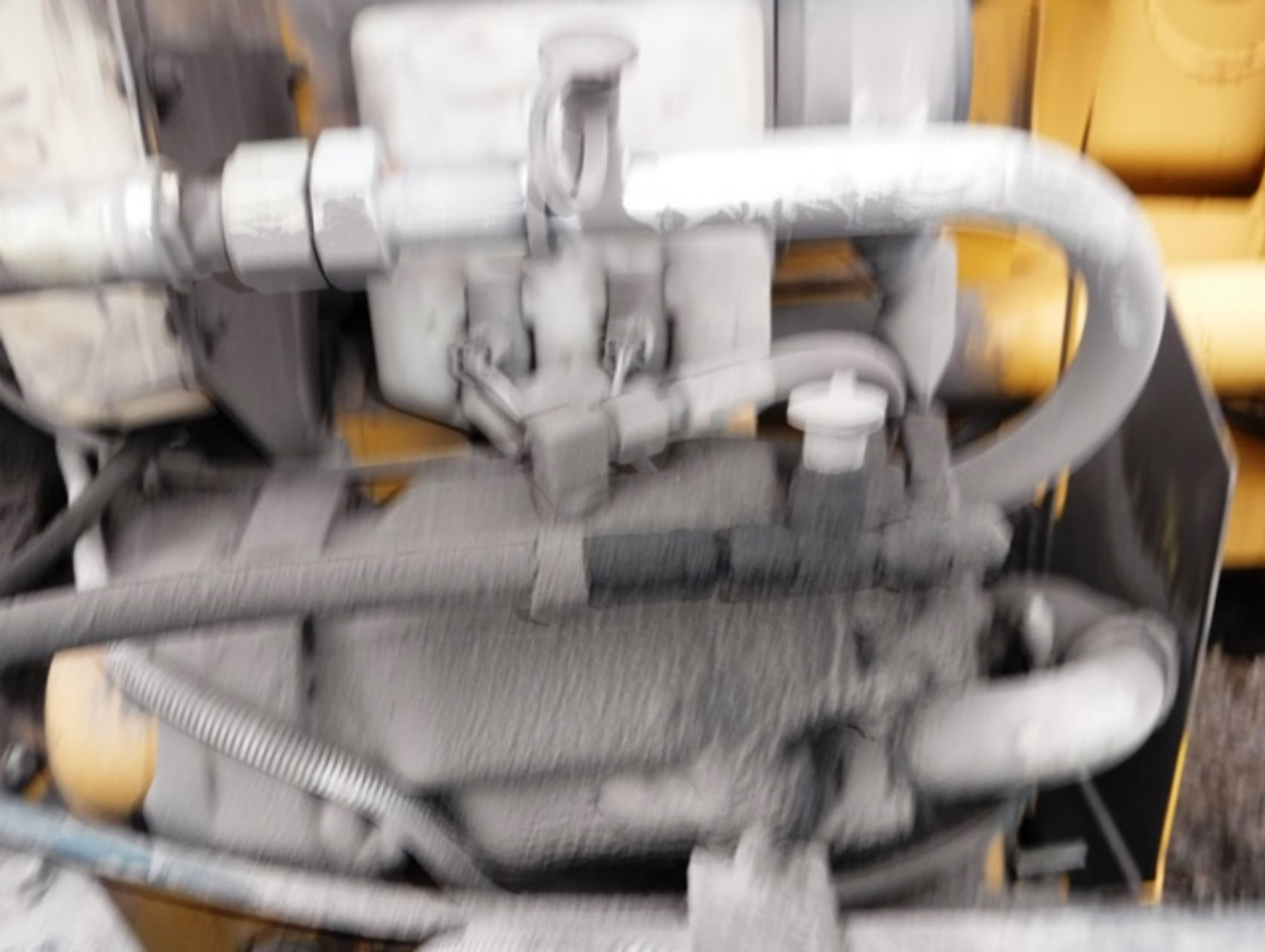
1508











Perkins

# IMPORTANT ENGINE INFORMATION

Engine Factory: **SAKI**

Engine Type: **4J03C-200**

Engine Code: **150-624**

Advertised kW: **79.4 @ 2200 RPM**

Valve Lash: **Exhaust 0.013 Inlet 0.008**

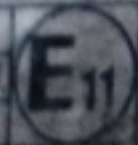
Emission Control System: **SPL**

Initial Injection Timing: **2.0**

Fuel Rate at Advertised kW:

Displacement: **3.9 L**

Idle: **1000 RPM**



Settings are to be made with engine at normal operating temperature and transmission in neutral.

This engine conforms to 1999 U.S. EPA and California Regulations for large non-road compression-ignition engines.

This engine is certified to operate on commercial fuel available.

1e11-97/68 CA#00/00